



FABHAR

# **WATERWORKS** CATALOG

## TABLE OF CONTENTS

Company Overview	1
Manufacturing / Engineering Capabilities	2
Product Overview	3
Detailed Product Pages	6
Contact Information	30

## INTRODUCTION

FabHar is a trusted supplier of high-quality precision parts for water, sanitary sewer, and stormwater management applications. With decades of experience and a steadfast commitment to excellence, we specialize in custom design, engineering, and manufacturing solutions tailored to the evolving needs of the waterworks industry.

Our extensive product line includes essential components such as pipe supports, clamps, manhole covers, and grating, all designed to deliver durability, reliability, and compliance with industry standards. We collaborate closely with our clients to develop cost-effective solutions that address unique project challenges and ensure optimal performance.

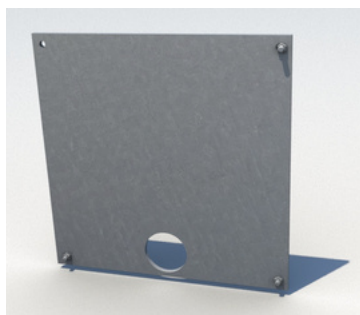
As a full-service manufacturer, FabHar offers advanced production capabilities, including CNC machining, waterjet cutting, and precision fabrication. Every component undergoes rigorous quality control to meet regulatory requirements and customer expectations. From initial consultation to final product delivery, our goal is to provide innovative, high-performance solutions that drive project success.

## MANUFACTURING CAPABILITIES

- CNC Machining (HAAS machinery)
- Waterjet and Laser Cutting
- Manual Mills and Lathes
- Design Engineering (AutoCAD, SolidWorks)
- Materials: Carbon Steel, Stainless Steel, Aluminum, Fiberglass, Plastics, and more
- Precision: +/- .0005 tolerance

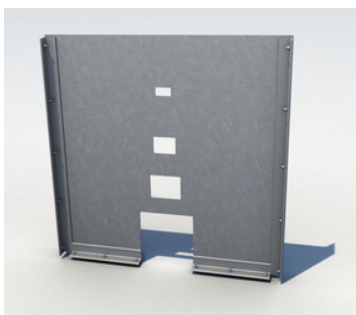
## ENGINEERING SERVICES

We offer comprehensive engineering support for all our products, ensuring precision, efficiency, and compliance with project specifications. Our team utilizes AutoCAD and SolidWorks to provide detailed design solutions, custom modifications, and structural calculations. Whether you need tailored fabrication, load analysis, or optimized material selection, our engineers are ready to assist in bringing your project to life.



**ORIFICES**

Fig. 1



**WEIRS**

Fig. 2



**FIXED PIPE SUPPORTS**

Fig. 3



**ADJUSTABLE FLANGE SUPPORTS**

Fig. 4



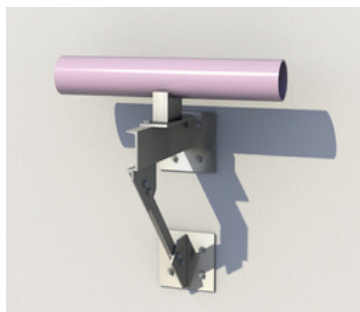
**ADJUSTABLE SADDLE SUPPORTS**

Fig. 5



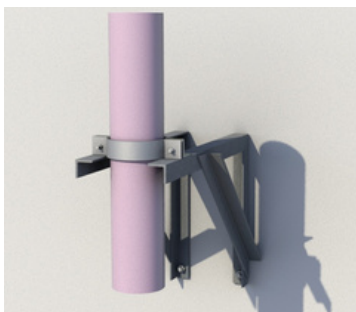
**HEAVY DUTY ADJ. FLANGE SUPPORTS**

Fig. 6



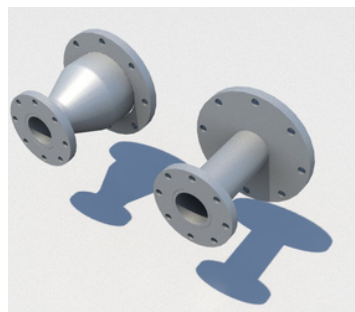
**HORIZONTAL WALL SUPPORTS**

Fig. 7



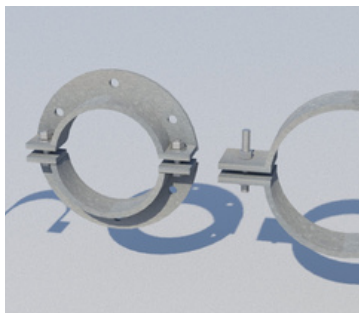
**VERTICAL WALL SUPPORTS**

Fig. 8



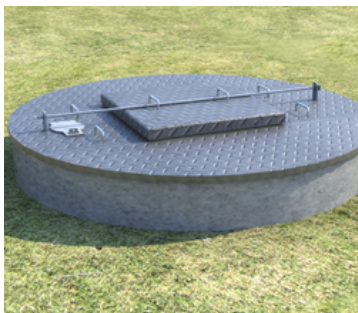
**SPOOLS AND REDUCERS**

Fig. 9



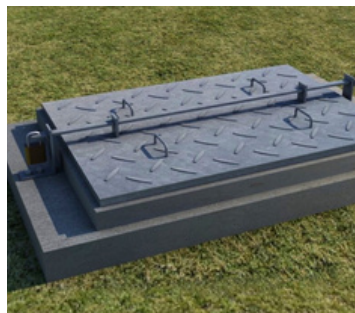
**PIPE CLAMPS**

Fig. 10



**MANHOLE COVERS**

Fig. 11



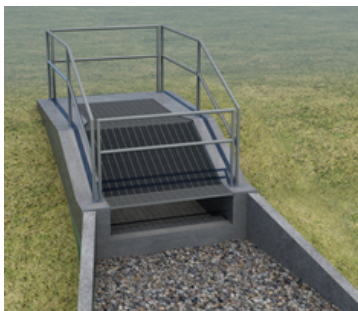
**SQUARE HATCH COVERS**

Fig. 12



**TRAFFIC AND PEDESTRIAN RAILINGS**

Fig. 13



**OUTFALL SOLUTIONS**

Fig. 14



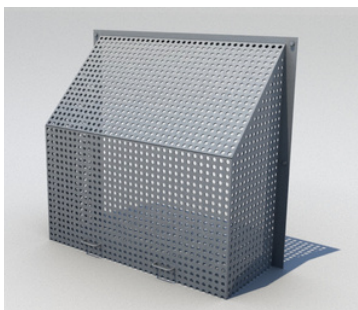
**STAIR ASSEMBLIES**

Fig. 15



**LADDERS**

Fig.16



**TRASH RACKS**

Fig. 17



**BOLLARDS**

Fig. 18



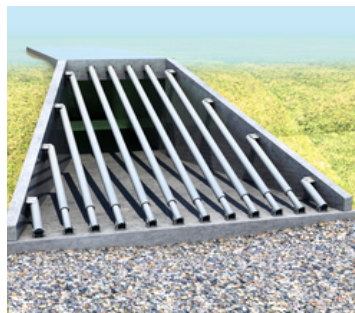
**PIPE ROLLERS**

Fig. 19



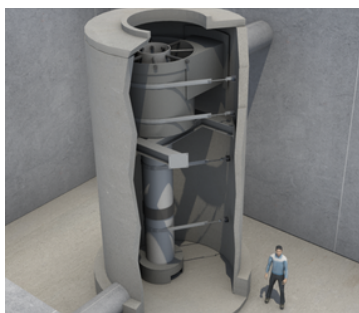
**J-VENTS**

Fig. 20



**GRATES**

Fig. 21



**VORTICES**

Fig. 22





*Orifice - Example 1*

## Orifices

*Precision Flow Control Plates for Various RCP Sizes and Retainage Parameter*

**Description:** Designed to accommodate various reinforced concrete pipe (RCP) sizes and retainage parameters, our orifices provide precise flow control and structural integrity.

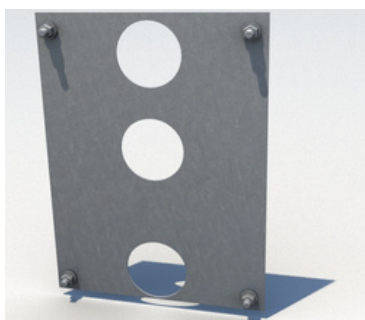
**Available Sizes:** Plate Thicknesses Ranging from 1/4" to 1"

### Material Options:

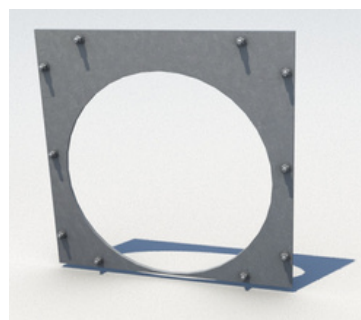
- **304 & 316 Stainless Steel** (corrosion-resistant)
- **Aluminum** (lightweight and rust-resistant)
- **Carbon Steel** (durable and cost-effective)

### Finishing Options:

- **Hot-Dip Galvanized** for superior corrosion resistance
- **Powder-Coated** for enhanced durability and color customization
- **Wet Paint** for tailored protection
- **Mill Finish** (available for aluminum and stainless steel)



*Orifice - Example 2*



*Orifice - Example 3*



## Weirs

*Precision Flow Control for Flood Plain Management*

**Description:** Our weirs are engineered to regulate water flow by accommodating various flood plain parameters provided by the customer. Designed for durability and efficiency, they ensure controlled water discharge and optimal performance in drainage systems.

**Available Sizes:** Custom opening sizes tailored to site-specific flood plain requirements

### Material Options:

- **304 & 316 Stainless Steel** (corrosion-resistant for harsh environments)
- **Aluminum** (lightweight and rust-resistant)
- **Carbon Steel** (durable and cost-effective)

### Finishing Options:

- **Hot-Dip Galvanized** for superior corrosion resistance
- **Powder-Coated** for enhanced durability and color customization
- **Wet Paint** for tailored protection
- **Mill Finish** (available for aluminum and stainless steel)

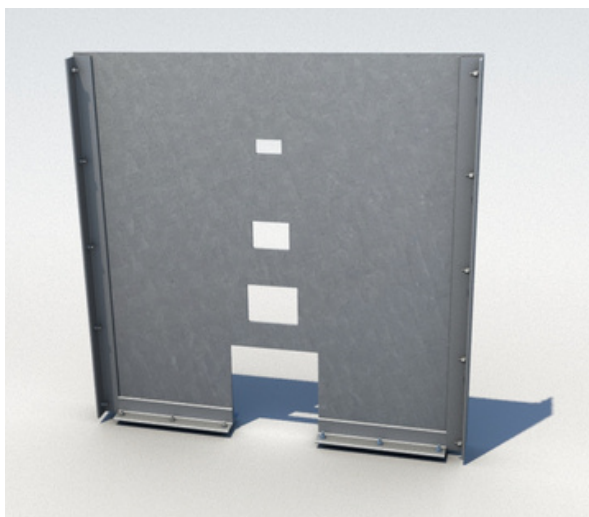
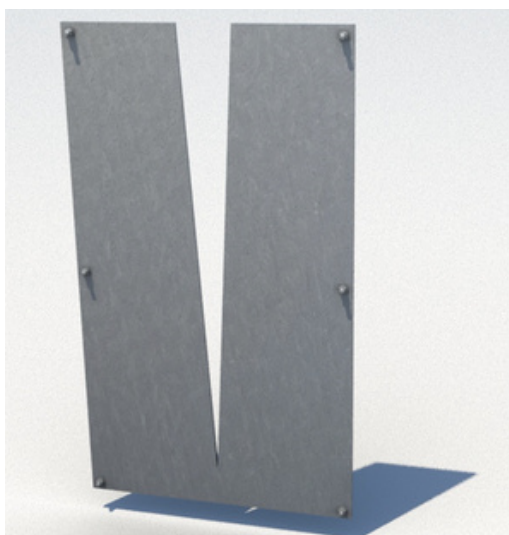


FIGURE 2

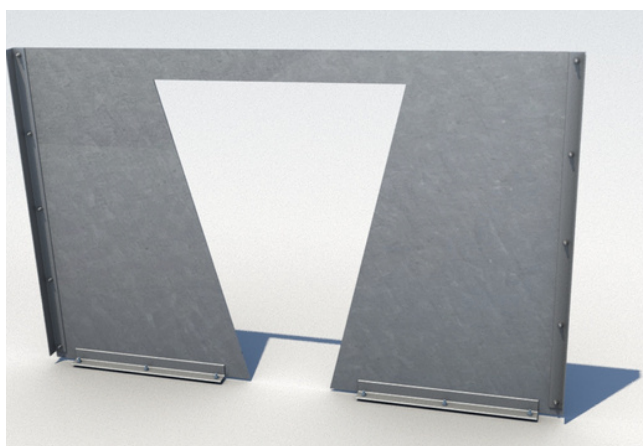
## WEIRS

(continued)

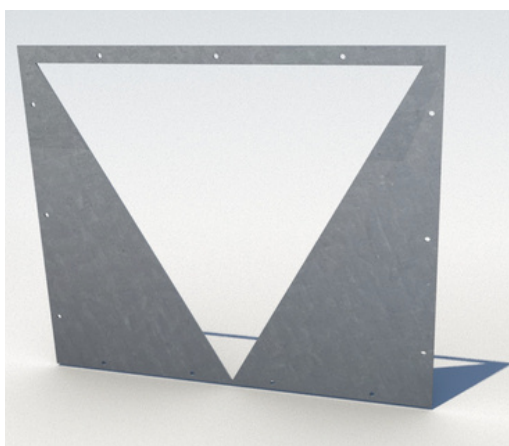
Weir - Example 1



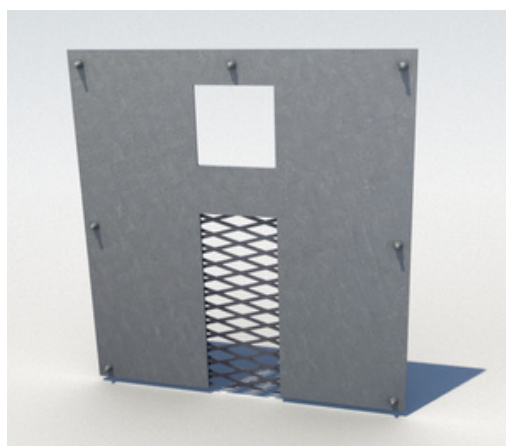
Weir - Example 2



Weir - Example 3



Weir - Example 4



Weir - Example 5



FIGURE 3

**FIXED PIPE SUPPORTS****Fixed Pipe Supports**

Heavy-Duty Stability for Various Pipe Applications

**Description:** Our Fixed Pipe Supports are designed for stable, heavy-duty applications where a specific carry pipe height is required. Engineered for durability, these supports are available with or without pipe straps and can accommodate a wide range of pipe sizes from 2" to 72". Custom adaptations are available to meet unique project specifications.

**Available Sizes:** Pipe Sizes Range: 2" - 72" (customizable for specific applications)

**Material Options:**

- **304 & 316 Stainless Steel** (corrosion-resistant for harsh environments)
- **Aluminum** (lightweight and rust-resistant)
- **Carbon Steel** (durable and cost-effective)

**Finishing Options:**

- **Hot-Dip Galvanized** for superior corrosion resistance
- **Powder-Coated** for enhanced durability and color customization
- **Wet Paint** for tailored protection
- **Mill Finish** (available for aluminum and stainless steel)



FIGURE 4

## ADJUSTABLE FLANGE SUPPORTS

### Adjustable Flange Supports

Medium-Duty Height-Adjustable Pipe Support

**Description:** The Adjustable Flange Support is a medium-duty pipe support solution designed to mount directly onto the existing flange of a pipe assembly. With adjustable height, it provides flexibility and stability for pipes ranging from 2" to 36" in diameter, making it ideal for industrial and infrastructure applications.

**Available Sizes:** Pipe Range - 2" - 36", Height adjustable for flexible installation

#### Material Options:

- **304 & 316 Stainless Steel** (corrosion-resistant for harsh environments)
- **Aluminum** (lightweight and rust-resistant)
- **Carbon Steel** (durable and cost-effective)

#### Finishing Options:

- **Hot-Dip Galvanized** for superior corrosion resistance
- **Powder-Coated** for enhanced durability and color customization
- **Wet Paint** for tailored protection
- **Mill Finish** (available for aluminum and stainless steel)



FIGURE 5

## ADJUSTABLE SADDLE SUPPORTS

*Adjustable Saddle Support*

### Adjustable Saddle Supports

Medium-Duty Height-Adjustable Pipe Support with Contoured Saddle Design

**Description:** The Adjustable Saddle Support provides stable, height-adjustable support for medium-duty applications. Its curved saddle conforms to the pipe's diameter for secure contact and weight distribution.

**Optional Add On:** Adjustable Saddle Support with Spacer – A light-duty variant for smaller diameter pipes and ambient air applications, offering stability while minimizing heat transfer.

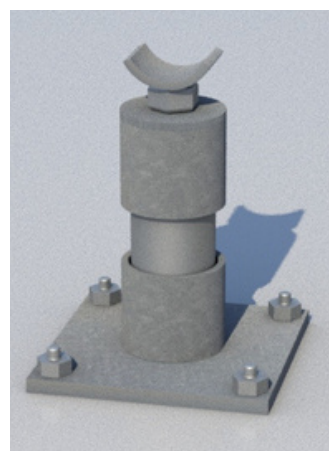
**Available Sizes:** Custom based on pipe compatibility

#### Material Options:

- **304 & 316 Stainless Steel** (corrosion-resistant for harsh environments)
- **Aluminum** (lightweight and rust-resistant)
- **Carbon Steel** (durable and cost-effective)

#### Finishing Options:

- **Hot-Dip Galvanized** for corrosion resistance
- **Powder-Coated** for enhanced durability and color customization
- **Wet Paint** for tailored protection
- **Mill Finish** (available for aluminum and stainless steel)



*Adjustable Saddle Support with Spacer*





## Heavy Duty Adjustable Flange Supports

Heavy-Duty Height-Adjustable Pipe Support for Large Pipe Applications

**Description:** The Heavy Duty Adjustable Flange Support is designed for high-load applications, providing stable and adjustable support for pipes up to 36" in diameter. Like the standard adjustable flange support, this model mounts directly onto an existing flange while offering enhanced durability for industrial, infrastructure, and high-stress environments.

**Available Sizes:** Pipe Size Range: Up to 36"

### Material Options:

- **304 & 316 Stainless Steel** (corrosion-resistant for harsh environments)
- **Aluminum** (lightweight and rust-resistant)
- **Carbon Steel** (durable and cost-effective)

### Finishing Options:

- **Hot-Dip Galvanized** for superior corrosion resistance
- **Powder-Coated** for enhanced durability and color customization
- **Wet Paint** for tailored protection
- **Mill Finish** (available for aluminum and stainless steel)

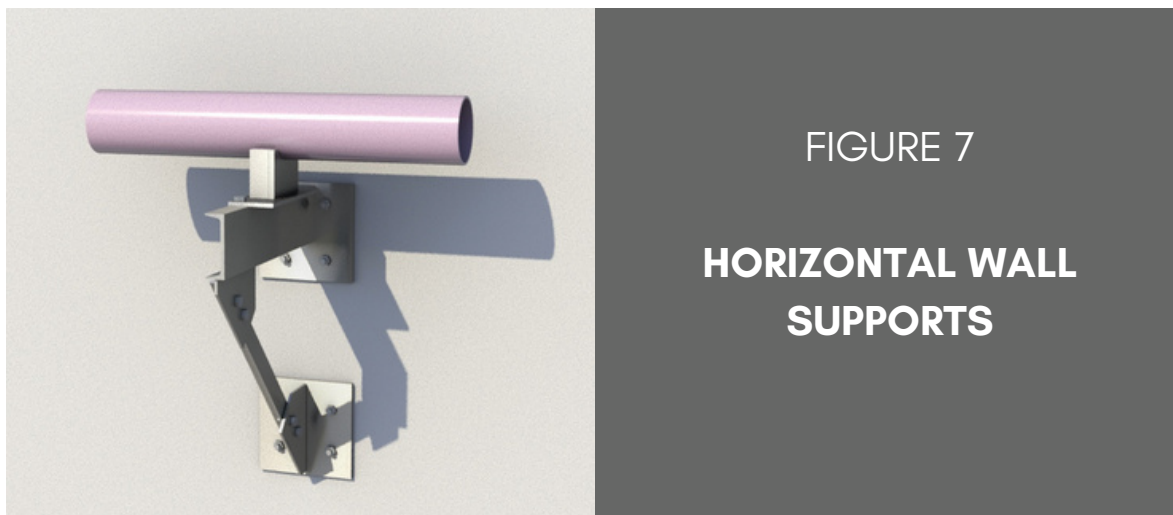


FIGURE 7

## HORIZONTAL WALL SUPPORTS

### Horizontal Wall Supports

*Versatile Wall-Mounted Pipe Support with Customizable Adjustment Options*

**Description:** A versatile and adaptable mounting solution designed to provide reliable structural reinforcement for various applications. This support can be customized with additional braces and adjustment options to meet specific project requirements. It offers a secure and durable solution for supporting pipes.

**Available Sizes:** Custom to fit project specifications

#### Material Options:

- **304 & 316 Stainless Steel** – Corrosion-resistant for harsh environments
- **Aluminum** – Lightweight and rust-resistant
- **Carbon Steel** – Durable and cost-effective

#### Finishing Options:

- **Hot-Dip Galvanized** – Superior corrosion resistance
- **Powder-Coated** – Enhanced durability and color customization
- **Wet Paint** – Tailored protection
- **Mill Finish** – Available for aluminum and stainless steel





## Vertical Wall Supports

*Adjustable Pipe Support for Wall-to-Pipe Specifications*

**Description:** Designed for secure wall-mounted pipe support, our Vertical Wall Support is adjustable to meet specific wall-to-pipe specifications.

**Available Sizes:** Suitable for pipes up to 16" in diameter, with custom heavy-duty solutions available upon request.

### Material Options:

- **304 & 316 Stainless Steel** (corrosion-resistant for harsh environments)
- **Aluminum** (lightweight and rust-resistant)
- **Carbon Steel** (durable and cost-effective)

### Finishing Options:

- **Hot-Dip Galvanized** for superior corrosion resistance
- **Powder-Coated** for enhanced durability and color customization
- **Wet Paint** for tailored protection
- **Mill Finish** (available for aluminum and stainless steel)

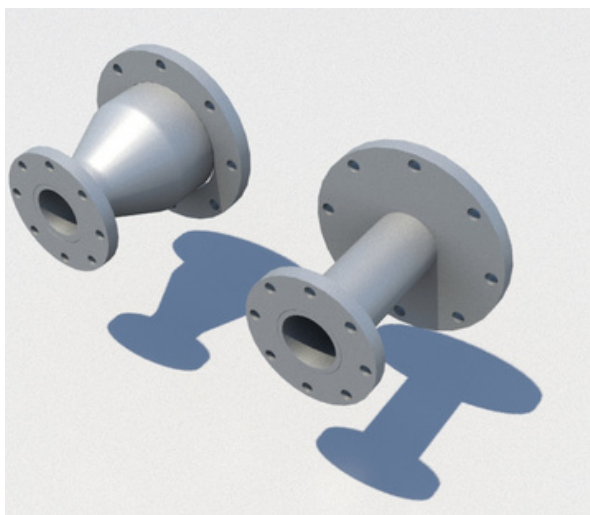


FIGURE 9

## SPOOLS AND REDUCERS

### Spools and Reducers

*Customizable Pipe Spool Assemblies for Various Applications*

**Description:** These prefabricated pipe sections are available in Flange by Flange or Flange by Plain End configurations and can be customized to fit specific project requirements. Reducers can be incorporated to provide adaptable and manageable solutions.

**Available Sizes:** Custom lengths available to fit any project size

#### Material Options:

- **304 & 316 Stainless Steel** (corrosion-resistant for harsh environments)
- **Aluminum** (lightweight and rust-resistant)
- **Carbon Steel** (durable and cost-effective)

#### Finishing Options:

- **Hot-Dip Galvanized** for superior corrosion resistance
- **Powder-Coated** for enhanced durability and color customization
- **Wet Paint** for tailored protection
- **Mill Finish** (available for aluminum and stainless steel)



*Spools with Reducers*

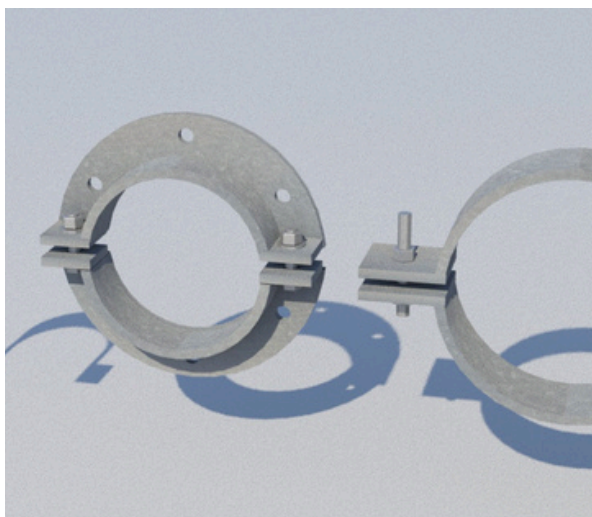


FIGURE 10

**PIPE CLAMPS****Pipe Clamps**

*Adjustable and Durable Clamping Solutions for 2"-24" Pipes in Various Conditions*

**Description:** Pipe Clamps are designed to provide secure and adaptable support for pipes. Engineered for durability, these clamps can withstand various environmental conditions, ensuring stability and longevity.

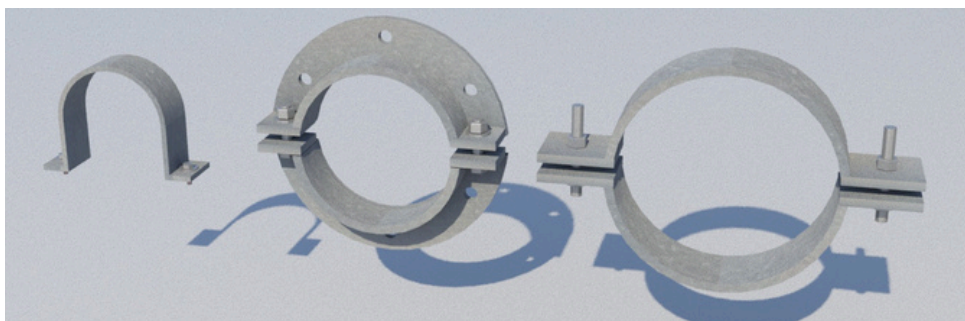
**Available Sizes:** 2" - 24" Diameter Pipe Compatibility

**Material Options:**

- 304 & 316 Stainless Steel (corrosion-resistant for harsh environments)
- Aluminum (lightweight and rust-resistant)
- Carbon Steel (durable and cost-effective)

**Finishing Options:**

- Hot-Dip Galvanized for superior corrosion resistance
- Powder-Coated for enhanced durability and color customization
- Wet Paint for tailored protection
- Mill Finish (available for aluminum and stainless steel)



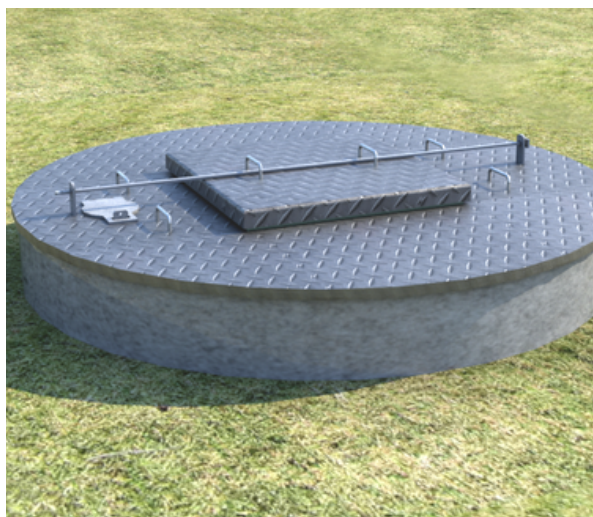


FIGURE 11

## ROUND MANHOLE COVERS

### Round Manhole Covers

*Durable Access Solutions for Utility and Industrial Applications*

**Description:** Our Round Manhole Covers are constructed from 3/8" checker floor plate carbon steel, ensuring durability and reliability for utility, municipal, and industrial applications. Designed for various manhole sizes, these covers provide secure access while allowing customization to meet project-specific requirements.

**Available Sizes:** 72", 84", 96", and 120" manhole arrangements

**Material:** Carbon Steel (3/8" checker floor plate)

**Finishing Options:** Hot-Dip Galvanized (standard for 95% of applications)

**Hatch Access:** Customizable configurations including center, off-center, or asymmetrical placements





FIGURE 12

## SQUARE HATCH COVERS

### Square Hatch Covers

*Durable and Accessible Floor Plate Solutions*

**Description:** Our Square Hatch Covers are designed for secure and convenient access to underground utilities, vaults, and other enclosed areas.

#### Available Sizes:

- Various size configurations available to suit project requirements
- Typically made from 3/8" checker floor plate for durability and slip resistance

#### Features:

- Available as a single removable piece or with integrated access hatches for ease of use

#### Material Options:

- **304 & 316 Stainless Steel** (corrosion-resistant)
- **Aluminum** (lightweight and rust-resistant)
- **Carbon Steel** (durable and cost-effective)

#### Finishing Options:

- **Hot-Dip Galvanized** for superior corrosion resistance
- **Powder-Coated** for enhanced durability and color customization
- **Wet Paint** for tailored protection
- **Mill Finish** (available for aluminum and stainless steel)



FIGURE 13

## TRAFFIC AND PEDESTRIAN RAILINGS

### TXDOT PR-11 Rails

*Pedestrian Road Access Railing - Engineered to TXDOT Specifications*

#### Description:

The TXDOT PR-11 Rail is a high-quality pedestrian road access railing designed and built in compliance with Texas Department of Transportation (TxDOT) standards. Engineered for durability and safety, it is ideal for bridges, walkways, and other roadway infrastructure projects.

**Available Sizes:** Custom; fabricated to meet project specifications

#### Material Options:

- Carbon Steel

#### Finishing Options:

- Hot-Dip Galvanized for superior corrosion resistance





FIGURE 14

**OUTFALL SOLUTIONS**

## Outfall Solutions

*Customizable Drainage Solutions for Efficient Water Discharge*

**Description:** Our Outfall Solutions are designed to provide durable and reliable drainage discharge systems. Built to meet project-specific requirements, they ensure proper water flow while incorporating safety features such as grating and railing per provided codes.

### General Design:

- Available in various sizes and configurations to fit project specifications and codes.
- Custom engineering options available for specialized applications.

### Material Options:

- **Aluminum** (lightweight and rust-resistant)
- **Carbon Steel** (durable and cost-effective)

### Finishing Options:

- **Hot-Dip Galvanized** for superior corrosion resistance
- **Powder-Coated** for enhanced durability and color customization
- **Wet Paint** for tailored protection
- **Mill Finish** (available for aluminum and stainless steel)



FIGURE 15

## STAIR ASSEMBLIES

### Stair Assemblies

*Pre-Engineered Bolt-In Stair Solutions for Efficient Installation*

**Description:** Our Bolt-In Stair Assemblies are designed for easy on-site installation, featuring pre-fabricated stringers and rails with bolt-in treads. These stair solutions ensure structural integrity while allowing for quick and efficient assembly.

#### Features:

- Pre-engineered stringers and handrails for consistent quality
- Bolt-in treads for easy installation and maintenance
- Custom configurations available upon request

#### Material Options:

- **304 & 316 Stainless Steel** (corrosion-resistant for harsh environments)
- **Aluminum** (lightweight and rust-resistant)
- **Carbon Steel** (durable and cost-effective)

#### Finishing Options:

- **Hot-Dip Galvanized** for superior corrosion resistance
- **Powder-Coated** for enhanced durability and color customization
- **Wet Paint** for tailored protection
- **Mill Finish** (available for aluminum and stainless steel)





## Standard Vertical Wall Ladders & Manhole Ladders

*Custom-Engineered Access Solutions for Industrial and Infrastructure Applications*

**Description:** Our Standard Vertical Wall Ladders & Manhole Ladders are designed for safe and durable access in industrial, commercial, and municipal applications. Built to meet structural and safety requirements, these ladders are available with non-slip rung solutions and multi-piece configurations for enhanced usability.

**Available Sizes:** Custom sizing to meet project requirements

### Material Options:

- **304 & 316 Stainless Steel** (corrosion-resistant for harsh environments)
- **Aluminum** (lightweight and rust-resistant)
- **Carbon Steel** (durable and cost-effective)

### Finishing Options:

- **Hot-Dip Galvanized** for superior corrosion protection
- **Powder-Coated** for durability and color customization
- **Mill Finish** for a raw metal appearance
- **Painted** to match project specifications

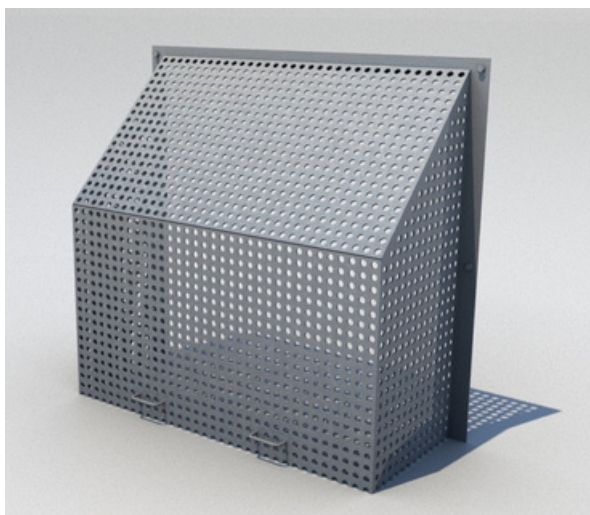


FIGURE 17

## TRASH RACKS

*Trash Rack – Example 1*

### Trash Racks

*Versatile Debris Control Solutions for Various RCP Applications*

**Description:** Our Trash Racks are designed to prevent debris from entering drainage systems while ensuring optimal water flow. Available in multiple configurations to suit different precast form openings and reinforced concrete pipe (RCP) installations.

#### Variations:

- **Dome Trash Rack** – Sized to fit precast form top openings.
- **RCP Tapered Fixed Trash Rack** – Immobile, bolted-in position for secure debris prevention.
- **RCP Trash Rack Flat Series** – Custom-made to fit various size.
- **Trash Rack Top Flat Series** – Alternative to the dome design, offering a flat-top structure.
- **RCP Hinged Trash Rack** – Hinged for easy maintenance.

#### Material Options:

- **304 & 316 Stainless Steel** (corrosion-resistant)
- **Aluminum** (lightweight and rust-resistant)
- **Carbon Steel** (durable and cost-effective)

#### Finishing Options:

- **Hot-Dip Galvanized** for superior corrosion resistance
- **Powder-Coated** for enhanced durability and color customization
- **Wet Paint** for tailored protection
- **Mill Finish** (available for aluminum and stainless steel)

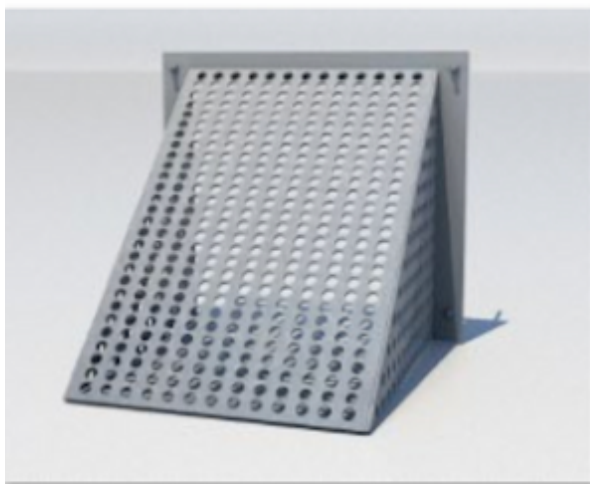
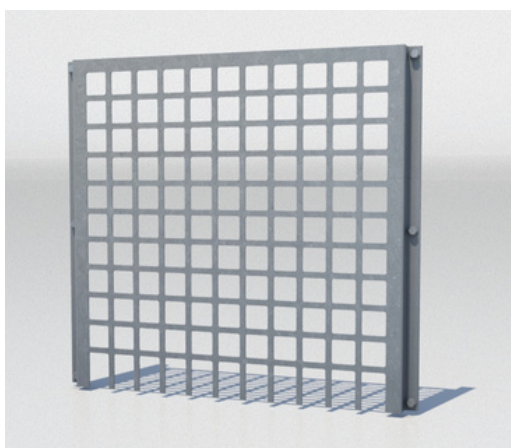


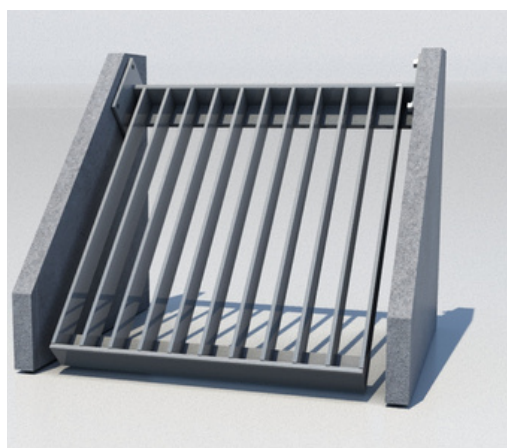
FIGURE 17

**TRASH RACKS**  
(continued)

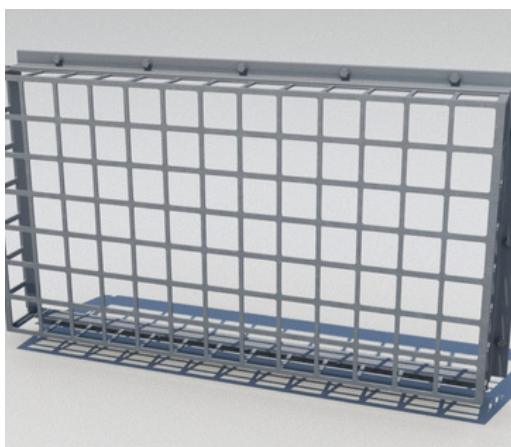
*Trash Rack - Example 2*



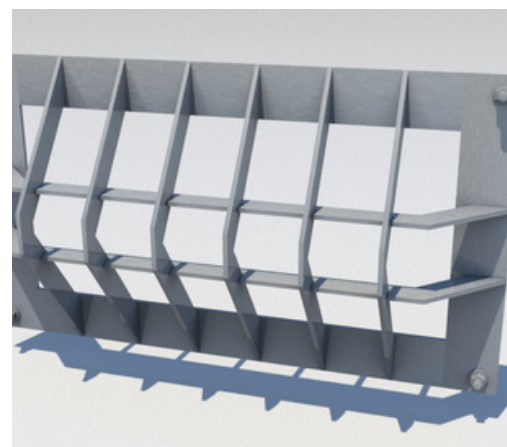
*Trash Rack - Example 3*



*Trash Rack - Example 4*



*Trash Rack - Example 5*



*Trash Rack - Example 6*



Standard Bollard

## Standard and Removable Bollards

*Versatile Protection with Optional Removability for Controlled Access*

**Description:** Our Standard and Removable Bollards provide reliable protection for pedestrian areas, parking lots, and restricted zones, ensuring safety while allowing controlled access. The removable option enables quick clearance for vehicle or equipment passage beyond the crash point, making it ideal for temporary access points.

**Available Sizes:** 6" or 8" diameter with SCH40 or SCH80 wall thickness (Custom sizes available)

**Material Options:** Carbon Steel

### Finishing Options:

- **Hot-Dip** Galvanized for corrosion resistance
- **Powder-Coated** for durability and color customization
- **Mill Finish** for a raw steel appearance
- **Painted** to match project requirement



Removable Bollard





FIGURE 19

**PIPE ROLLERS****Pipe Rollers**

*Efficient Pipe Support and Movement with Heavy-Duty Durability*

**Description:** Our Pipe Rollers are engineered to support and guide pipes during both installation and operation, reducing friction and ensuring smooth movement. Designed for durability, they accommodate a variety of pipe sizes and load capacities, making them ideal for industrial, municipal, and commercial applications.

**Available Sizes:** Custom and standard designs available in multiple sizes and configurations to meet your specific project needs.

**Material Options:**

- **304 & 316 Stainless Steel** (corrosion-resistant)
- **Aluminum** (lightweight and rust-resistant)
- **Carbon Steel** (durable and cost-effective)

**Finishing Options:**

- **Hot-Dip Galvanized** for superior corrosion resistance
- **Powder-Coated** for enhanced durability and color customization
- **Wet Paint** for tailored protection
- **Mill Finish** (available for aluminum and stainless steel)



FIGURE 20

**J-VENTS****J-Vents**

*Reliable Ventilation and Pressure Relief for Waterworks Systems*

**Description:** Our J-Vents are specifically engineered for use in waterworks systems, providing reliable ventilation and pressure relief to maintain system efficiency and prevent pressure buildup. Designed to withstand the demands of water and wastewater treatment, they ensure optimal airflow and long-term durability in municipal, industrial, and commercial waterworks applications.

**Available Sizes:** Custom and standard designs available in various sizes and configurations to meet the needs of your waterworks system.

**Material Options:**

- **304 & 316 Stainless Steel** (corrosion-resistant)
- **Aluminum** (lightweight, rust-resistant)
- **Carbon Steel** (strong, cost-effective, and durable)

**Finishing Options:**

- **Hot-Dip Galvanized** for superior corrosion resistance
- **Powder-Coated** for enhanced durability and color customization
- **Wet Paint** for tailored protection
- **Mill Finish** (available for aluminum and stainless steel)



FIGURE 21

**GRATES****Grates**

*Durable and Efficient Drainage Solutions for Waterworks Systems*

**Description:** Our Grates are designed to provide superior drainage and flow control in waterworks systems, effectively managing stormwater and wastewater. Built for durability, they ensure reliable performance in municipal, industrial, and commercial waterworks applications, preventing blockages and maintaining optimal system efficiency.

**Available Sizes:** Custom and standard designs available in various sizes and configurations to suit your waterworks system needs.

**Material Options:**

- **304 & 316 Stainless Steel** (corrosion-resistant and durable)
- **Aluminum** (lightweight and rust-resistant)
- **Carbon Steel** (strong, cost-effective, and built to endure)

**Finishing Options:**

- **Hot-Dip Galvanized** for superior corrosion resistance
- **Powder-Coated** for enhanced durability and color customization
- **Wet Paint** for tailored protection
- **Mill Finish** (available for aluminum and stainless steel)



## Vortices

*Efficient Flow Management and Debris Control for Waterworks Systems*

**Description:** Our Vortices are engineered to optimize flow management and enhance debris control in waterworks systems, reducing sedimentation and ensuring smooth operation in stormwater and wastewater management. Designed for durability, they are ideal for municipal, industrial, and commercial applications where effective flow control is essential.

**Available Sizes:** Custom and standard designs available in various sizes and configurations to meet the specific requirements of your waterworks system.

### Material Options:

- **304 & 316 Stainless Steel** (corrosion-resistant)
- **Aluminum** (lightweight and rust-resistant)
- **Carbon Steel** (strong, cost-effective)

### Finishing Options:

- **Hot-Dip Galvanized** for superior corrosion resistance
- **Powder-Coated** for enhanced durability and color customization
- **Wet Paint** for tailored protection
- **Mill Finish** (available for aluminum and stainless steel)



**FabHar Corporation**

524 E. Hazelwood  
Princeton, TX 75407  
214-802-9400  
[www.fabhar.com](http://www.fabhar.com)

**Chris Pearce**

Lead Estimator - Job Shop/Waterworks  
[chris@fabhar.com](mailto:chris@fabhar.com)  
214-802-9400 ext. 122 (o)  
469-819-7011 (c)

**Jim Hargis**

President  
[jhargis@fabhar.com](mailto:jhargis@fabhar.com)  
214-802-9400 ext. 2 (o)  
214-325-1871 (c)

